



CONTACTS:

Segezha Group

infotimber@segezha-group.com
+7 (499) 962-82-00

Natali Danilina
Head of Sales,
Wood Pellets

danilina_na@segezha-group.com
+7 (915) 303-50-81

segezha-group.com



WOOD PELLETS

WE WILL SURROUND YOU WITH NATURE!



segezha-group.com

Wood fuel pellets



Wood pellets are a renewable, environmentally friendly fuel. It's produced from sawdust and fine chips under high pressure. Advantages of pellets in comparison with other fuels:

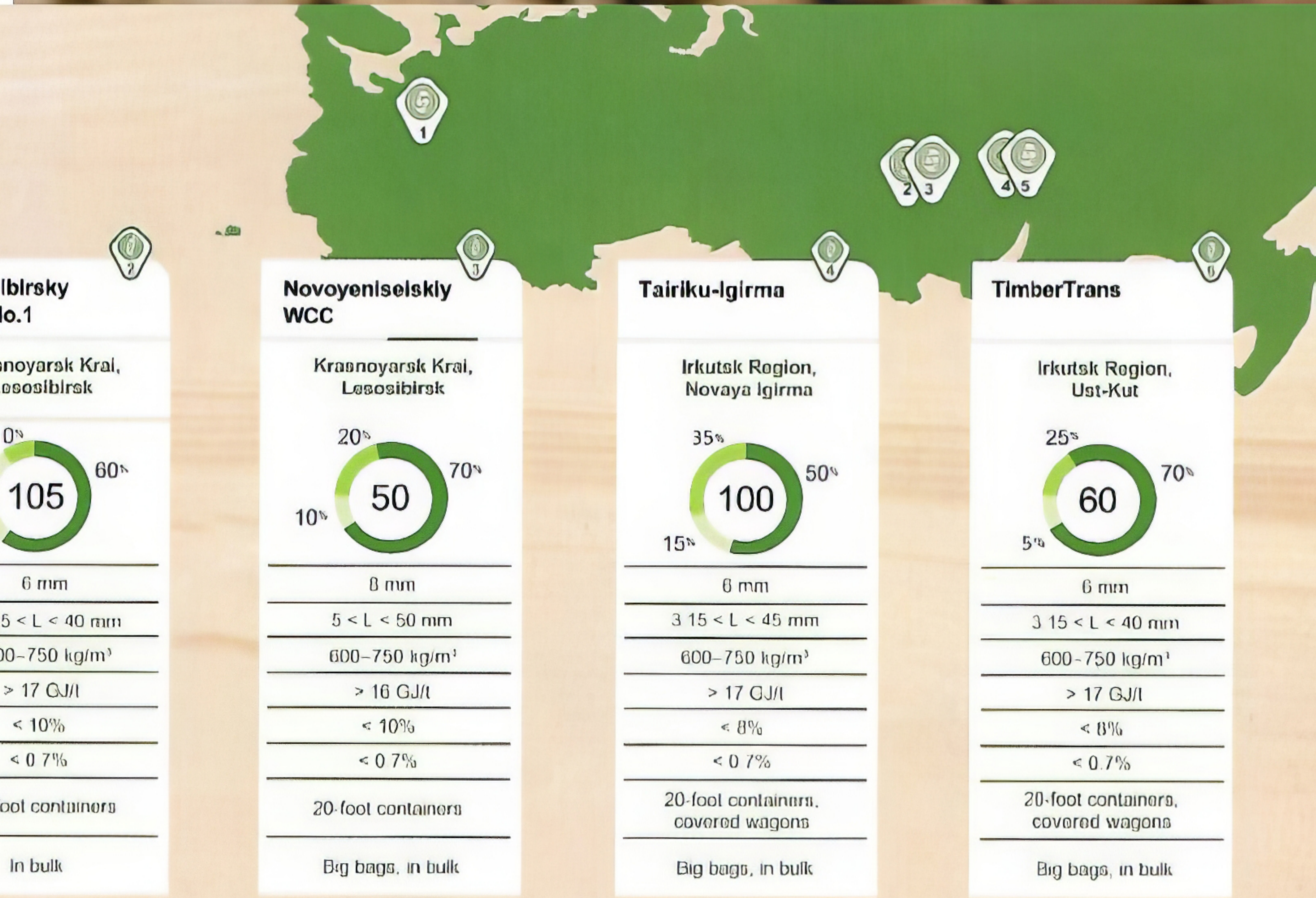
<p>Lower cost of pellets than gas, oil, diesel</p>	<p>Aesthetic and compact in storage and using</p>	<p>Minimum burning residues thanks to low ash content</p>	<p>High calorific value, 16.5 MJ/kg</p>
<p>High heat transfer, higher efficiency than other fuels</p>	<p>No emission of harmful substances when burning, manufactured without any chemical additives</p>	<p>Similar dimensions and mechanical strength, fines share less than 1% by weight</p>	<p>Caring for environment</p>



Wood fuel pellets

<p>3 mln m³</p> <p>Segezha Group sawn timber plants capacity (sawdust and wood chips are sawmill by-products)</p>	<p>100% raw materials safety</p> <p>Segezha Group pellet production is provided with own raw materials</p>	<p>5 pellet mills</p> <p>The equipment is supplied by Hekotek</p>	<p>370 ths tons annually</p> <p>Segezha Group total production of pellets</p>	<p>No. 1 in Russia</p> <p>Segezha Group occupies leading positions among Russian manufacturers with a 16% share</p>
---	---	--	--	--

sawmill facilities



Mill			
Region			
Annual capacity, thousand tons			
<table border="0"> <tr><td>■ Pine (%)</td></tr> <tr><td>■ Spruce/Fir (%)</td></tr> <tr><td>■ Larch (%)</td></tr> </table>	■ Pine (%)	■ Spruce/Fir (%)	■ Larch (%)
■ Pine (%)			
■ Spruce/Fir (%)			
■ Larch (%)			
Diameter			
Length			
Bulk density			
The minimum calorific value			
Moisture content			
Ash content			
Shipping methods			
Packing methods			

Sokol Timber Company

Vologda Region, Sokol

55 (90% Pine, 10% Spruce/Fir)

6 mm

3 15 < L < 40 mm

> 600 kg/m³

10 5 < K < 10 GJ/t

< 10%

< 0.7%

Trucks

Big bags

Lesosibirsky LDK No.1

Krasnoyarsk Krai, Lesosibirsk

105 (30% Pine, 60% Spruce/Fir, 10% Larch)

6 mm

3 15 < L < 40 mm

600-750 kg/m³

> 17 GJ/t

< 10%

< 0.7%

20-foot containers

In bulk

Novoyenselskiy WCC

Krasnoyarsk Krai, Lesosibirsk

50 (20% Pine, 70% Spruce/Fir, 10% Larch)

8 mm

5 < L < 50 mm

600-750 kg/m³

> 16 GJ/t

< 10%

< 0.7%

20-foot containers

Big bags, in bulk

Tairiku-Igirma

Irkutsk Region, Novaya Igirma

100 (35% Pine, 50% Spruce/Fir, 15% Larch)

6 mm

3 15 < L < 45 mm

600-750 kg/m³

> 17 GJ/t

< 8%

< 0.7%

20-foot containers, covered wagons

Big bags, in bulk

TimberTrans

Irkutsk Region, Ust-Kut

60 (25% Pine, 70% Spruce/Fir, 5% Larch)

6 mm

3 15 < L < 40 mm

600-750 kg/m³

> 17 GJ/t

< 8%

< 0.7%

20-foot containers, covered wagons

Big bags, in bulk